

INTRODUCES



GROVE LANDSCAPE LEARNING

A SERIES OF ONLINE SESSIONS
5 WEEKENDS | 20 HOURS

With the idea of dissemination of knowledge about the meaning and scope of the subject of landscape architecture to younger minds, LA Journal introduces LANDSCAPE LEARNING, A SERIES OF ONLINE SESSIONS. The weekend classes are designed to enlighten students of various **UNDERGRADUATE PROGRAMS** [in Architecture, Art & Design, Environment and allied fields] studying in India about the discipline.

UNIT 1 LANDSCAPE ARCHITECTURE AN ORIENTATION

DURATION

5 WEEKS

[4 HOURS PER WEEK]

CYCLE 1

03 JULY - 01 AUGUST

2021

CYCLE 2

02 SEPTEMBER - 01 OCTOBER

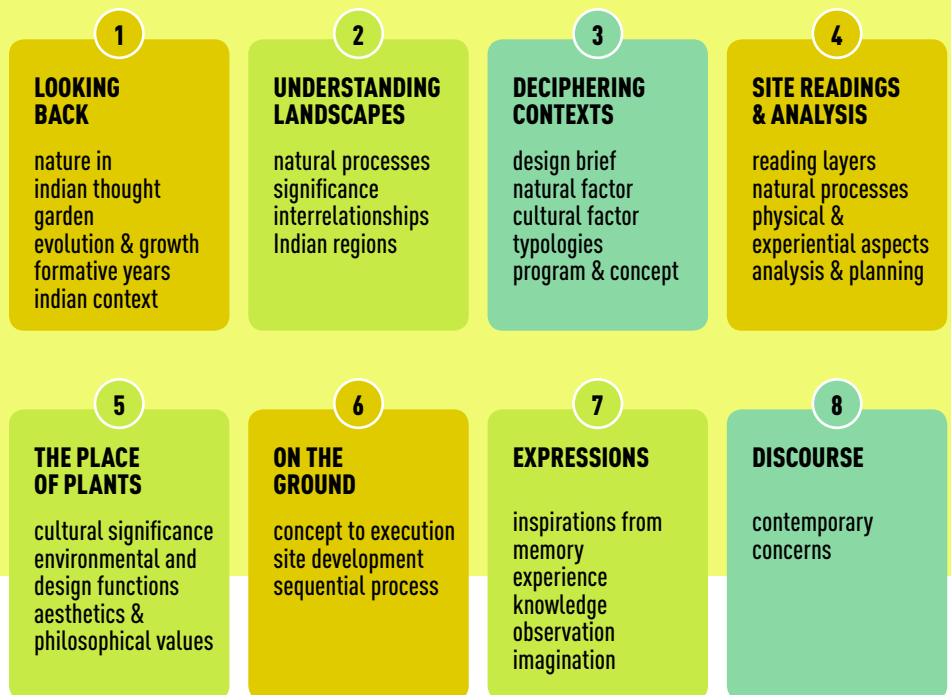
2021

FOR QUERIES

t: **+91-11-41584375, 9810600754**

e: **grovelessons@gmail.com**

LA Journal (since 2001), a professional publication based on the subject of landscape architecture explores the relationship of nature and culture in the realm of design, in context of Indian subcontinent. The scope of work of the group also includes organizing students' design competitions, exhibitions, research and documentation and academic books.



Conducted by **Geeta Wahi Dua**, landscape architect, co-editor of **LA Journal**, each session will inform, share and reflect on theoretical knowledge about the subject supported by case examples and studies from landscape practice and research in India. The learning sessions will enable the students to employ the knowledge about the subject in their creative space. Each session is designed as an interactive online class, organized on Zoom/ Google Meet platform. Short videos of places and experts sharing their views on various aspects will compliment the learning process.

PRESENTS

GROVE LANDSCAPE LEARNING

A SERIES OF ONLINE SESSIONS
5 WEEKS | 20 HOURS

UNIT 2

WORKING WITH NATURE

PROTECT . CONSERVE . ENGAGE



The learning sessions explore diverse set of knowledge base from traditional models and contemporary practices [in the realm of spatial design and planning] for a preposition of development in sync with nature that establishes environmental and cultural continuities. They try to bring to forefront some of the ideas and values in regard of protecting and conserving nature while engaging with it. These sessions are designed for the students of Undergraduate Programs [in Architecture, Landscape Architecture, Environment, Art & Design, and allied fields] and others who are interested.

Keywords: Environmental Continuum | Decentralized | Multidisciplinary and Multiscalar | Geographically and Culturally Diverse | With Nature | Spirit of "Place"

DURATION

5 WEEKS

THURSDAY & FRIDAY

2 HOURS EACH

CYCLE 1

**25 NOVEMBER - 24 DECEMBER
2021**

FOR QUERIES

t: **+91-11-41584375, 9810600754**

e: **grovelessons@gmail.com**

LA Journal [since 2001], a professional publication based on the subject of landscape architecture explores the relationship of nature and culture in the realm of design, in context of Indian subcontinent. The scope of work of the studio also includes conducting landscape studies, research works and academic books.

1

SUSTAINABILITY



values & principles
scales
geographical regions
timelines

2

NATURE & CULTURE



traditional
settlements
tribal cultures
environmental
movements

3

ECOLOGICAL DESIGN



site analysis &
planning
soil & water
conservation
degraded sites

4

CONSERVATION & DEVELOPMENT



riverfronts
urban greens
urban storm water
management
treating wastewater

5

NATURE IN THE CITY



natural & cultural
histories
ecological master plans
sustainable
development goals

Conducted by **Geeta Wahi Dua**, landscape architect, co-editor of **LA Journal**, each session will inform, share and reflect on the subject supported by studies and case examples from practices and research in Indian subcontinent. Each session [organized on Zoom platform] is designed as an interactive online class. Short videos of contextual examples and experts sharing their views will compliment the learning process. The sessions will enable the participants to employ the knowledge in their creative space.